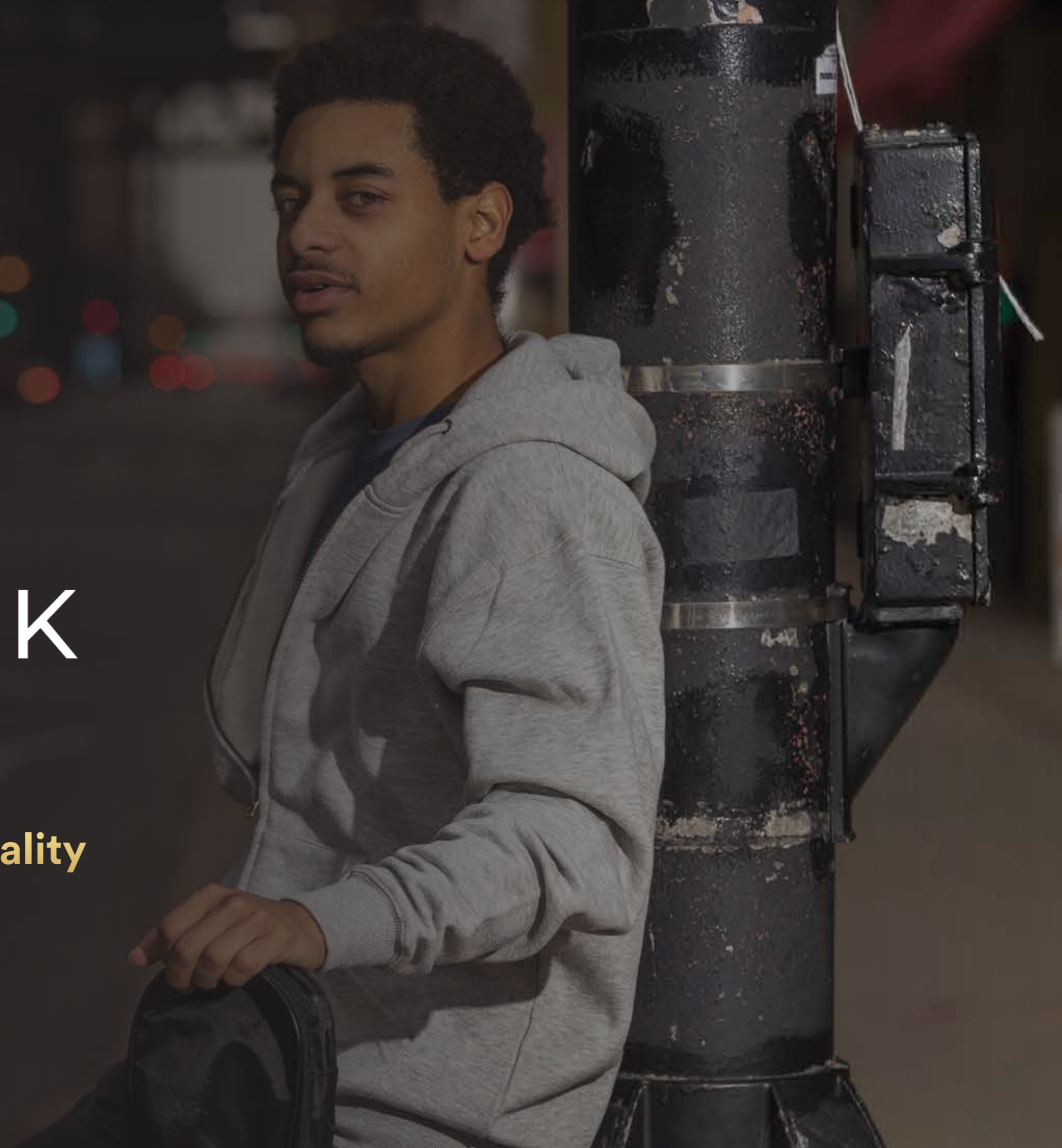




**Ethical Sourcing - Exculsive Quality**  
**Eligible Pricing**





# INDEX

---

Overview	3
Tops	5
Outerwear	11
Socks	16
Gloves & beanies	18
Contact Us	19



# ABOUT US

starmarkenterprises is the next up and coming leader in the wholesale apparel industry. We're a customer-driven company providing an extensive range of first quality products such as t-shirts, casual outerwear, undergarments, activewear and other new products our team is currently working on. We further cater to the needs of clients looking to create a clothing line and /or private labeling.

Our main focus is to provide exceptional pricing without compromising on quality and customer service. In addition to that, we've joined hands with manufacturers from Pakistan who have been in business for over 5 decades providing quality and sustainable products to the global market and are proud to source raw material grown locally where the cotton is nicknamed as "White Gold" for its overall purity and softness.

Our products have been sewed with keeping every intricate detail in mind for the comfortability of our clients and customers. We offer our services to a broad customer base such as Wholesalers, Distributors, Screen Printers, Companies providing Promotional Products, Vendors, Hotel industries, independently owned retailers to corporate retailers and various franchises. We greatly appreciate the opportunity to be able to provide the best quality service your business deserves!





# SOCIAL RESPONSIBILITIES

## FAIRTRADE POLICY:

Our company provides fair trade agreements and transparency with our manufacturer to help keep a developing countries economy stable to provide a justifiable and stable income for their workers.

## LABOR POLICIES:

We do not employ any child laborers within our facilities as we believe in equal pay for all our employees whereas we also provide adequate training to ensure all our employees are well versed with what their responsibilities are within the workplace.

## SOURCING:

We source our products from manufacturers who have taken huge measures to ensure every single drop of water is accounted for to help keep water wastage at a minimum and utilize only what is needed We source products from manufacturers who have the highest quality and are compliant according to international standards.

## RECYCLING:

We as a company are committed to personally help reduce as many carbon footprints as possible and to take part in keeping our earth pollution free which has become a serious problem in our day and time.

## CHARITABLE GIVING:

Our Company has agreements in place with our suppliers to give back a certain percentage of the profits to the less fortunate who struggle to live on a day-to-day basis .





# TOPS

CREWNECK T-SHIRT  
V NECK T-SHIRT  
LONG SLEEVE T-SHIRT  
THERMAL TOPS  
& A.SHIRTS





# CREW-NECK T-SHIRT

## PRODUCT INFORMATION AND FABRIC RATIO:

- 5.3 oz 100% cotton
- H/grey is 90% cotton 10% polyester
- Classic fit Crew-neck
- Taped neck and shoulders
- Double-needle bottom and sleeve hem
- Individually packed
- Great for retail
- Size s-2xl in all colours
- Size s-4xl in black and white

## MEASUREMENT (IN)

Size	S	M	L	XL	2XL	3XL	4XL
Chest width	18	20	22	24	26	27	28
Body Length	27	28	29	30	31	32	33

- BLACK
- WHITE
- H/GREY
- NAVY
- RED
- LIGHT PINK

- CHARCOAL
- NUDE
- MELANGE DENIM
- LIGHT BLUE
- MELANGE DARK GREEN







# V-NECK - T-SHIRT

## PRODUCT INFORMATION AND FABRIC RATIO:

- 5.3 oz 100% cotton
- H/grey is 90% cotton 10% polyester
- Classic fit V-neck
- Taped neck and shoulders
- Double-needle bottom and sleeve hem
- Individually packed
- Great for retail
- Size s-4xl in black and white

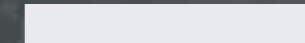
## MEASUREMENT (IN)

Size	S	M	L	XL	2XL	3XL	4XL
Chest width	18	20	22	24	26	27	28
Body Length	27	28	29	30	31	32	33

BLACK



WHITE





# LONG-SLEEVE T-SHIRT

## PRODUCT INFORMATION AND FABRIC RATIO:

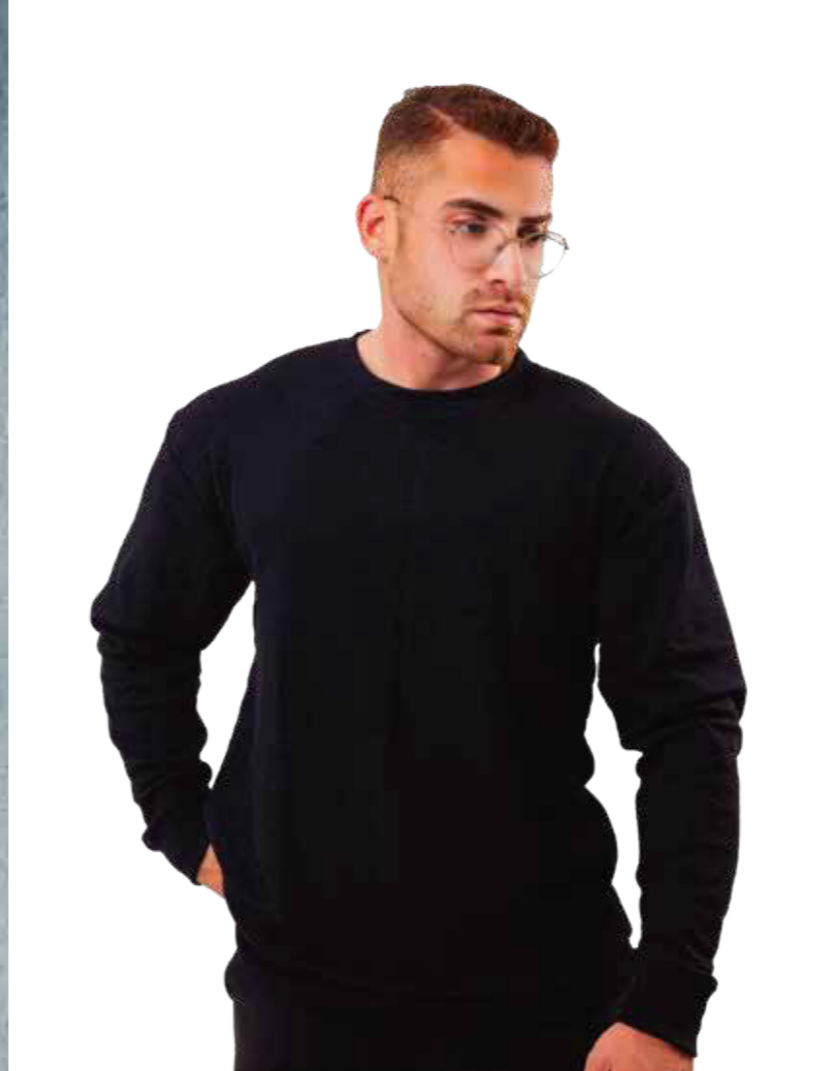
- 5.3 oz 100% cotton
- Classic fit Crew-neck long sleeve
- Taped neck and shoulders
- Double-needle bottom and sleeve hem
- Individually packed
- Great for retail
- Size s-3xl in all colours
- Ribbed cuff & neck

## MEASUREMENT (IN)

Size	S	M	L	XL	2XL	3XL
Chest width	18	20	22	24	26	27
Body Length	28	29	30	31	32	33







# THERMAL TOPS

## PRODUCT INFORMATION AND FABRIC RATIO:

- 7.4 oz 60% cotton 40% Polyester
- Classic fit Crew-neck long sleeve
- Taped neck and shoulders
- Double-needle bottom and sleeve hem
- Individually packed
- Great for retail
- Size s-3xl in all colours
- Ribbed cuff & neck

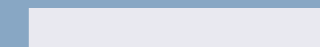
## MEASUREMENT (IN)

Size	S	M	L	XL	2XL	3XL
Chest width	18	19.5	21	22.5	24	25
Body Length	27	28	29	30	31	32

BLACK



WHITE





# A SHIRTS

## PRODUCT INFORMATION AND FABRIC RATIO:

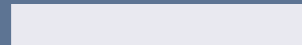
- 5.3 oz 100% cotton
- Classic fit
- Taped neck and shoulders
- Double-needle bottom
- Individually packed
- Great for retail
- Size s-4xl in all colours
- Super stretch ribbed fabric

## MEASUREMENT (IN)

Size	S	M	L	XL	2XL	3XL	4XL
Chest width	9.5	10.5	11.5	12.5	14.5	15.5	16.5
Body Length	30.5	31	32	33	34	35.5	36.5

BLACK

WHITE







# Outerwear

Pullover & Zip Up Hoodies



# PULLOVER FLEECE HOODIE

**PRODUCT INFORMATION AND FABRIC RATIO:**

- 8.3 oz., 70% cotton / 30% polyester
- H/Grey is 65% cotton / 35% polyester
- Extra soft heavy stretchable Fleece
- Jersey-lined hood
- Front pouch pocket
- Spandex-blend ribbed cuffs
- Color-matched drawcord
- Individually packed
- Great for retail

**MEASUREMENT (IN)**

	S	M	L	XL	2XL
Chest width	20	22	24	26	27.5
Body Length	26	27	28	29	30

BLACK



NAVY BLUE



HEATHER GREY



WHITE







# ZIP-UP FLEECE HOODIE

## PRODUCT INFORMATION AND FABRIC RATIO:

- 8.3 oz., 70% cotton / 30% polyester
- H/Grey is 65% cotton / 35% polyester
- Extra soft heavy stretchable Fleece
- Jersey-lined hood
- Front pouch pocket
- Spandex-blend ribbed cuffs
- Color-matched drawcord
- Individually packed
- Great for retail

## MEASUREMENT (IN)

	S	M	L	XL	2XL
Chest width	20	22	24	26	27.5
Body Length	26	27	28	29	30

BLACK



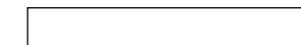
NAVY BLUE



HEATHER GREY



WHITE





# JOGGING SUIT

## PRODUCT INFORMATION AND FABRIC RATIO:

- 8.3 oz., 70% cotton / 30% polyester
- H/Grey is 65% cotton / 35% polyester
- Extra soft heavy stretchable Fleece
- Jersey-lined hood
- Front pouch pocket
- Spandex-blend ribbed cuffs
- Color-matched drawcord
- Individually packed
- Great for retail

## MEASUREMENT (IN)

	S	M	L	XL	2XL
Chest width	20	22	24	26	27.5
Waist relaxed	26	28	30	32	34
Out seam	41	42	42	43	43
Body Length	26	27	28	29	30

BLACK



NAVY BLUE



HEATHER GREY







# JOGGING PANTS

## PRODUCT INFORMATION AND FABRIC RATIO:

- 8.3 oz., 70% cotton / 30% polyester
- H/Grey is 65% cotton / 35% polyester
- Extra soft heavy stretchable Fleece
- Jersey-lined hood
- Front pouch pocket
- Spandex-blend ribbed cuffs
- Color-matched drawcord
- Individually packed
- Great for retail

### MEASUREMENT (IN)

	S	M	L	XL	2XL
Waist relaxed	26	28	30	32	34
Out seam	41	42	42	43	43

BLACK



NAVY BLUE



HEATHER GREY





# SOCKS

CREW SOCKS  
ANKLE SOCKS  
LOW CUT SOCKS





# CREW SOCKS



# ANKLE SOCKS



# LOW CUT SOCKS





# GLOVES AND BEANIE SKULL CAPS







# STARMARK



71911 Indigo shores lane  
Richmond Texas 77569



[starmarkhtx@gmail.com](mailto:starmarkhtx@gmail.com)



832-931-9133



[starmarkenterprises.com](http://starmarkenterprises.com)

